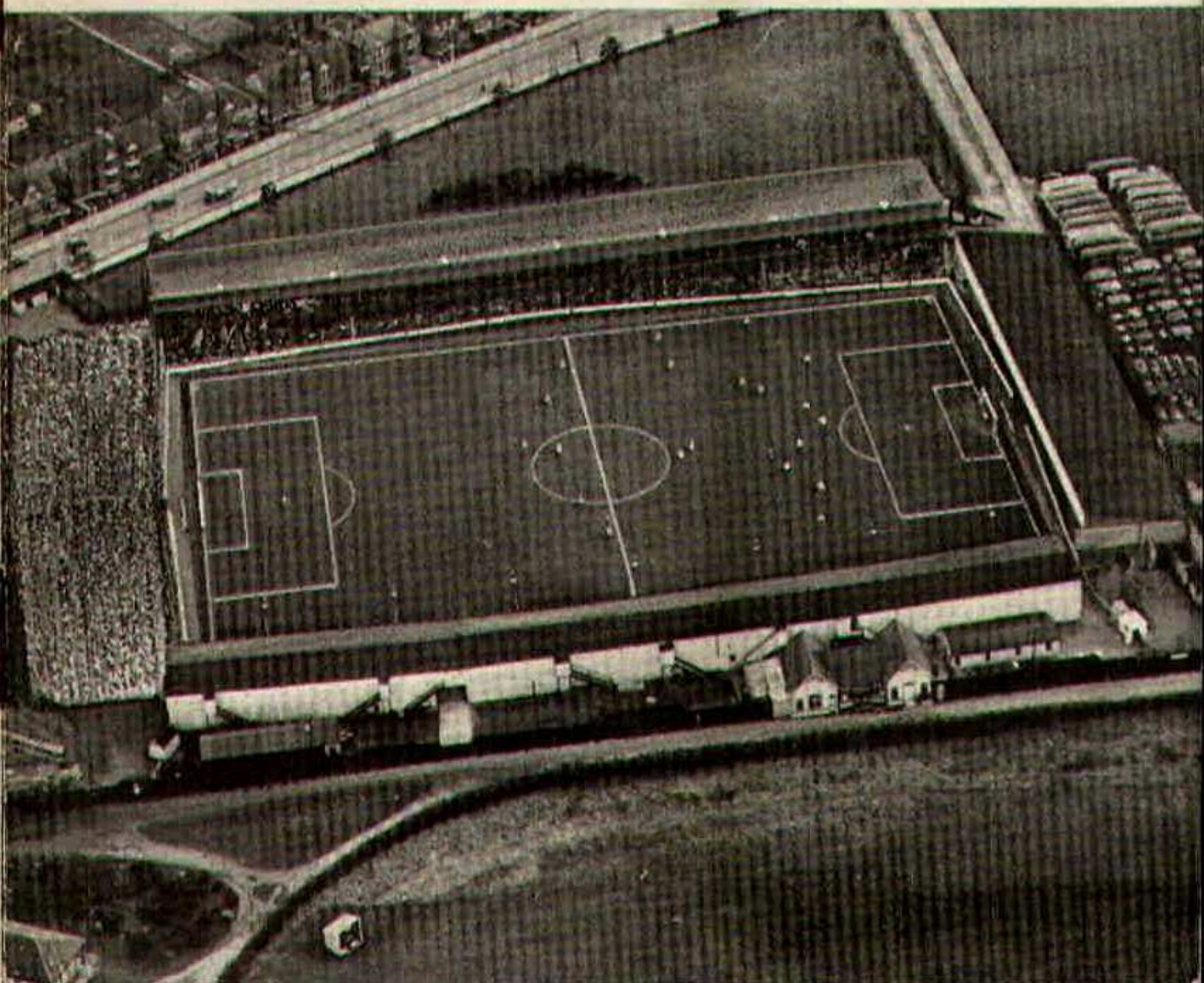


SWINDON TOWN



FOOTBALL CLUB

OFFICIAL PROGRAMME 6d.



FURNITURE AND FURNISHINGS

OF CHARM AND DISTINCTION



CARPETS - FLOORCOVERINGS

LOOSE COVERS - CURTAINS

SKILLED WORKSHOP REPAIR SERVICE

AND REMOVALS



Contractors to Government Departments, Hospitals
and Borough Councils

MILLS & MERRICKS LTD.

16-17 BRIDGE STREET, SWINDON

TELEPHONE 5365/6

TUESDAY, 2nd OCTOBER, 1962

DIVISION III

SWINDON TOWN

v.

BRISTOL ROVERS

Kick-off 7.30 p.m.

REFEREE:

Mr. K. H. BURNS (Dudley)

LINESMEN:

Red Flag -

Mr. H. D. DAVIES (Cardiff)

Yellow Flag -

Mr. V. N. GUY (Southampton)

for fine printing
you should have
a fine printer

BOROUGH PRESS (SWINDON) LTD

Maylott Studios

For **GROUP & SPORT** Photographs

Official Photographer to
Swindon Town Football Club

31 FARINGDON ROAD

TEL. 22792

NOTTON'S CAFE

COUNTY ROAD

200 yards from Ground

RIGHT ON THE BALL

C. DUNN & SON

BUILDERS & DECORATORS

Alterations, Renovations, Conversions
Plumbers & Sanitary Engineers

503 CRICKLADE ROAD

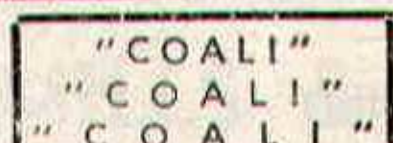
TEL. 22522

LEESE, ING & Co. Ltd.

Mineral Water and
Squash Manufacturers

Lansdown Rd., Swindon

Telephone 22744



J. WILMER

**ST. MARGARET'S ROAD
SWINDON**

Telephone 22535

L. Wollen

OFF LICENCE

WINES and SPIRITS

Arkell's Ales and Stout

373 Cricklade Rd., Swindon
Deliveries Daily Phone 3508

SWINDON TOWN FOOTBALL COMPANY LIMITED

Registered Office: COUNTY GROUND, SWINDON.

Directors:

Mr. W. J. CASTLE (Chairman)

Mr. H. E. LANE (Vice-Chairman)

Mr. B. T. HAMILTON (Hon. Treasurer)

Messrs. C. CHANDLER, J.P., J. DAVIES,

R. FRICKER, C. J. GREEN, F. PLYER, H. WILLIAMS and K. H. WILMER

Manager: B. J. HEAD

Secretary: R. A. MORSE

VOL. 13

TUESDAY, OCTOBER 2nd, 1962

No. 7

CLUB NOTES

Saturday was undoubtedly the day of disappointments. The morning brought two set-backs. After the fine display given by Swindon Boys against London Boys, and the victory at Cardiff many thought this was going to be the boys' year. The prospects were bright, and the team looked quite good. However, Bristol changed all that by winning the Senior game by two goals to one, and the under fourteen age match by five goals to one. In both cases Bristol were the better side, just a shade stronger, quicker to the ball, and a well balanced team.

The game which followed on the County Ground in the afternoon was in many respects drab and uninteresting. Frome, top of the Wiltshire Premier League, and to date undefeated, tried hard, and chased every ball. The Swindon team, almost London Combination strength, and including no fewer than nine full-time professionals, seemed to lack interest. In the first half particularly, there was no drive or urgency about their play. Things brightened up a little in the second half, when we enjoyed most of the game and scored three goals, and Frome faded right out, with our goalkeeper having little to do for very long spells.

WILSONS (SWINDON) LTD.

BUILDERS OF MODERN ATTRACTIVE
HOUSES AND BUNGALOWS

Enquiries to:

Head Office: 90 COMMERCIAL ROAD, SWINDON 6361

Site Office: COVENTRY FARM ESTATE, WROUGHTON 271

Site Office: QUEENSFIELD ESTATE, STRATTON S.M. 3405

The Rendezvous of all Sportsmen -

THE CROWN INN

(Host: Frank Plyer)

Arkell's Best Ales : Fully Licensed

Snacks, etc.

Stratton St. Margaret Tel. 2339

Always at your service

L. BIBBY

For all Types, Rags, Iron and Metal,
etc. Spot Cash Paid. Please Tel.
2101 and our van will call.

THE PADDOCK, ERMIN STREET
STRATTON ST. MARGARET

FISH

POTATOES

**T. QUALITY (Swindon)
LTD.**

Wholesale Merchants

COLLEGE STREET

TEL. 5446/7

For Best Quality Wet Fish
9 a.m. - 6 p.m. (except Mondays)

YORK ROAD FISHERIES

Frying Mid-day Tuesday, Thursday,
Friday and Saturday

Phone 3680

MARSHGATE GARAGE

MOTOR ENGINEERS :: ROOTES GROUP DEALERS

STRATTON ROAD - SWINDON - WILTS.

Tel. Swindon 22788

TWO MINUTES FROM GROUND

CLUB NOTES - continued

The game was enlivened by the frequent announcements over the Public Address System, Halifax 0—Swindon 1. Half-time, Halifax 0—Swindon 2. Fifty minutes, Halifax 0—Swindon 3. A quarter of an hour remaining for play, Halifax 1—Swindon 3. Then after the match — the bombshell; unbelievable. Halifax 4—Swindon 3. Not until a report came through from Halifax itself would the party at the County Ground realise the facts — Swindon had lost.

Such incidents happen to all teams, but we just couldn't believe it had happened to Swindon. Who was most upset? Surely our own players, they felt the defeat more keenly than anyone, even the most partisan supporter. Fortunately our young lads are young enough and wise enough to learn from this experience, and it was a bitter one. We are sure in future our lads will not take matters easily. Not only have we lost points, but also spoiled an excellent goal average. Previous to the game, we had only conceded eleven goals in eleven matches.

However, let us give credit to our opponents for a great recovery. What joy in that dressing room, and in the Board Room! Halifax have been very much in the doldrums of late. What a wonderful tonic, a win when all seemed lost. It should act as a spur, and great encouragement.

Now to this evening's game, and the future. No more looking back, but forward to better things. The senior side faces a strenuous programme. Bristol Rovers — a local derby. Whatever the limitations of the Rovers, they will surely prove dour fighters. On Saturday we entertain Watford, top of the League table; seventeen points from thirteen games, thirty-three goals scored with twenty-one against. A week today, 9th October, we play the return game at Bristol, and on the

PANKHURST

The Palace - Gorse Hill - Swindon

**MOTOR CYCLE - SCOOTER AND
THREE-WHEELER SPECIALISTS**

Open Mon. to Sat. 9 a.m. - 8 p.m.

Phone 5466

Their kit is supplied by

SWINDON SPORTS CENTRE

WHO HAVE THE BEST SELECTION

Tel. 4270

114 COMMERCIAL ROAD

IVOR MESSENGER & SONS

High-Class Family Butchers

QUALITY WITH ECONOMY :: FAIREST PRICES IN TOWN

1 COLLEGE STREET, SWINDON

Tel. 5647

£10 TYPEWRITERS from £10

FULLY GUARANTEED

**Also full selection new standard and portable typewriters
OFFICE EQUIPMENT**

**DOBELL SHEARMAN
& Co. Ltd.**

26 High Street & 33 Faringdon Road, Swindon.

Tel. 4961/2

CLUB NOTES - continued

following Saturday again visit that city to play Bristol City (at present bang in form). The following week we have to play the League Cup match at Notts County, and on Saturday, 20th October, Reading visit the County Ground. In all one might say — six needle games, almost local derbies.

In future programmes we hope to reproduce signed photographs of each of the players. These should prove invaluable for the collectors of players and their autographs.

The Bristol Rovers' trainer is well known to Swindonians. Wally McArthur was a former wing-half with the Rovers and has played many games at the County Ground.

The cost of today's match ball has been kindly donated by Mr. Claude E. Barkham of Claude E. Barkham Limited, Swindon's well known Radio, Television and Electrical Dealer. Mr. Claude Barkham has always been a great follower of Swindon Town since he started his business in the town 37 years ago. His staff have joined him in wishing the Club every success in the future, and the hope that this will be Swindon's Promotion Year!

OUR VISITORS

It is with real pleasure that we greet our visitors from Bristol for our Division III game this evening. The Rovers are very old friends and, as always, we extend a warm welcome to them.

Details of their playing staff are as follows:—

GEOFF BRADFORD

Bristol-born. Signed professional forms for Bristol Rovers in June 1949. Established an enviable reputation early in his career as a hat-trick specialist and many of his goals have been of the spectacular kind. Capped for England (v. Denmark in Copenhagen) and played in the West Indies with the Football Association tourists. Has played in nearly every position for Rovers — in both defence and attack. Height 6ft., Weight 11st. 11lbs., Age 35.

JOE DAVIS

Bristolian. Product of Soundwell Football Club, a leading Bristol club which has provided Rovers with a number of professionals in the post-war years. Although it was not until two seasons ago that he made his first-team debut, Joe was awarded his first benefit with the Club in 1960. Became Rovers' regular pivot in 1960-61, but has also played in most defensive positions. Height 5ft. 9ins., Weight 11st. 6½lbs., Age 24.

JOHN FROWEN

Welshman. Last season's Club Captain. Joined Rovers in 1958 in an exchange deal with Cardiff City, where John had a good deal of First Division experience. Has played centre-half in Rovers' League and F.A. Cup sides, but was regular left back in the past two seasons. Schoolboy athlete of considerable repute. Height 5ft. 10½ins., Weight 12st. 11lb., Age 30.

IAN HAMILTON

Bristolian. Joined Rovers in 1956, became a full-time professional last December on completion of his apprenticeship in the aircraft industry. Played for Rovers' F.A. Youth Cup eleven at Southampton prior to reaching his sixteenth birthday. Product of Bristol & District club, Thornbury. Height 5ft. 8½ins., Weight 10st. 9lbs., Age 22.

For Quality FLOWERS - FRUIT - VEGETABLES
also FROZEN FOODS

CLARKE'S of Old Swindon

Proprietors: A. G. G. and J. A. W. HUNT

64 DEVIZES ROAD - SWINDON

Phone 22337

ORDERS DELIVERED

SEA VIEW CAMP

Camp Road, Wyke Regis, Weymouth. Tel 3351

Site overlooks Chesil Beach - Ideal for Camping Parties

Also Modern Caravans for Hire

Swindon Bacon Curing Co. Ltd.

Specialists in

BACON - PORK - COOKED HAM

50 FLEET STREET, SWINDON

Telephone 22122

Meet your friends for an enjoyable evening at

THE KINGSDOWN INN

(Host A. W. Vann)

FULLY LICENSED - ARKELL'S BEERS

SNACKS - Etc.

STRATTON ST. MARGARET

Tel. 3283

OUR VISITORS - continued

DOUG HILLARD

Bristolian. This sturdy defender made the Rovers' right-back position his own in recent seasons. Signed professional forms for Rovers in July 1957. Previous experience was as an inside-forward with a local hospital's staff team. Has developed into one of Manager Bert Tann's successful conversions to the defence. Height 5ft. 8½ins., Weight 12st. 12lbs., Age 27.

HAROLD JARMAN

Bristolian. Joined Rovers in 1959 from Victoria Athletic, old established club in the Bristol & District League. Gloucestershire Cricket Club professional, where he is a batsman of some promise. Regular right-winger for the last two seasons. Height 5ft. 8ins., Weight 10st. 12lbs., Age 23.

BOBBY JONES

Bristolian. Like his cousin, fellow Rovers' professional Joe Davis — is a product of renowned local club, Soundwell. Plays in both inside-forward positions and can also perform on either wing. Amateur with Rovers in Season 1955/56 and signed full-time professional forms in July 1956. Height 5ft. 8½ins., Weight 11st. 11lbs., Age 23.

RAY MABBUTT

Native of Aylesbury in Buckinghamshire. Joined Rovers during his National Service in 1955 and signed professional forms in 1956 as an inside-forward. Made his first-team debut as a winger but was successfully converted into a left half. Ray even made a fair job of the centre-forward position for a spell last season! Height 5ft. 6ins., Weight 10st. 11lb., Age 26.

NORMAN SYKES

Club Captain — a Bristolian, was an England Schools' International and joined Rovers straight from school at the age of fifteen. A splendidly-built player who has proved to be a tower of strength in defence and has also played in the Rovers' League side in the forward line. England Youth International. Height 6ft., Weight 12st. 9lbs., Age 26.

OUR VISITORS - continued

DAVID STONE

Bristolian. Joined Rovers straight from school in 1958/59 after a highly successful season when he captained Bristol Schoolboys, winners of the English Schools' F.A. Shield. Became a professional at the age of seventeen, and made his first team debut in May 1961. Position, right-half; Height 5ft. 10½ins., Weight 12st. 5lbs., Age 19.

MICKY SLOCOMBE

Aged 21, born in Bristol. Joined Rovers as an amateur when 15 years old, after playing for the Bristol Boys' team which reached the semi-final of the English Schools' F.A. Shield in Season 1955-56. Graduated through Rovers' junior teams and became a full-time professional player in July 1961. Height 5ft. 8½ins., Weight 11st. 8½lbs.

DAVID BUMPSTEAD

Born at Rainham, Essex in November 1935. Transferred to Rovers from Millwall in December 1961. Gained an amateur International Cap for England while playing for Tooting & Mitcham. Captained Millwall after joining them in Season 1958/59, and has given Rovers good service as regular right-half. Height 5ft. 10ins., Weight 11st. 4lbs.

KEITH WILLIAMS

Born Liverpool, and his first League club was Tranmere Rovers, from which club he joined Plymouth Argyle. Transferred to Bristol Rovers in January 1962. Established a reputation as a free-scoring inside-forward and Rovers hope he will play a big part in their efforts to regain their Second Division status. Height 5ft. 10ins., Weight 12st. 1lb., Age 25.

ESMOND MILLION

Signed during close season from Middlesbrough F.C., for whom he had played since 1956/57. A goalkeeper of considerable merit and courage who adopts complete command of his area. A north countryman, born at Ashington, Northumberland. Height 6ft., Weight 11st. 8½lbs., Age 24.

BERNARD HALL

Born at Bath in July 1942. Signed as a professional in September 1959 after serving the club as an amateur for a year. Has appeared as goalkeeper in League Division Two 1961/62. Height 5ft. 10ins., Weight 11st.

B. J. MARTIN & SONS LTD.

Butcher

10 HIGH STREET
MARLBOROUGH
Phone 212

126 VICTORIA ROAD
SWINDON
Phone 4860

CLARK BROS. (SWINDON) LTD.

**BUILDING AND CIVIL ENGINEERING
CONTRACTORS.**

SWINDON

Telephone: Swindon 3417/8/9

OUR VISITORS - continued

GWYN JONES

Welsh Under-23 International — left-back. Born in Carnarvon. Transferred from Wolverhampton Wanderers in July 1962 after seven years sterling service with the famous Midland club. Is expected to considerably strengthen Rovers' defence. Height 5ft. 10ins., Weight 11st. 12lbs., Age 27.

RAY HENDY

Another Bristolian from Soundwell F.C. In his second season as a professional after being an amateur with Rovers since 1960. An established centre-half with previous experience as centre-forward. Height 6ft., Weight 12st. 10lbs., Age 22.

HUGH RYDEN

A Scot, born in Dumbarton. Transferred from Leeds United last summer. A lively and well-built inside-forward of considerable promise. Height 5ft. 8½ins., Weight 10st. 11lbs., Age 19.

JIMMY HUMES

Carlisle-born winger or inside-forward with considerable League experience with Preston North End. Transferred to Rovers last summer. Aged only 19, Jimmy stands 5ft. 10ins., and weighs 11st. 4lbs.

TERRY OLDFIELD

Bristolian, tall and well built. An amateur with Rovers from May 1957 until signing professional in February 1958. A determined centre- or inside-forward. Height 5ft. 10½ins., Weight 12st. 4lbs., Age 23.

KEITH JONES

Welshman from Blaengwynfi. Capped several times as an amateur International last season. Joined Rovers on professional forms in January 1962. A goal-scoring left winger. Age 23, Height 5ft. 8ins., Weight 10st. 11lb.

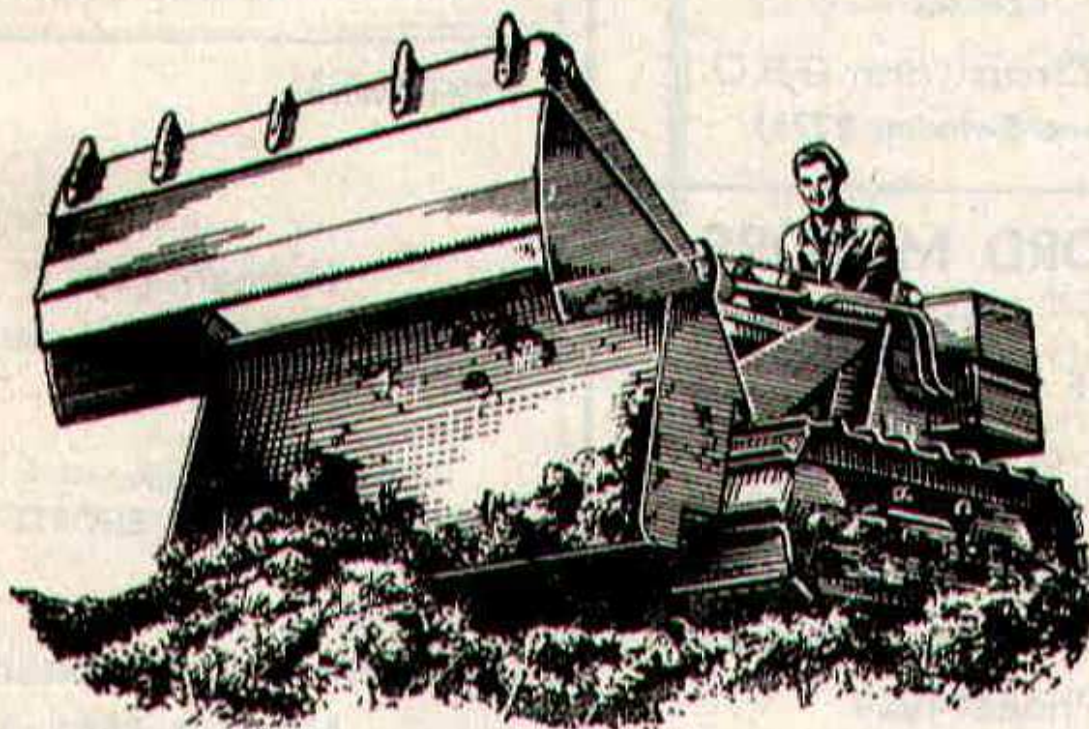
DIVISION III FIXTURE LIST

Date	Opponents	Ground	Result
August 18	BARNLEY	(A)	1-1
21	COVENTRY CITY	(H)	4-1
25	NORTHAMPTON TOWN	(H)	2-3
28	COVENTRY CITY	(A)	0-2
September 1	QUEEN'S PARK RANGERS	(A)	2-2
4	BRIGHTON and HOVE ALBION	(A)	1-1
8	HULL CITY	(H)	2-0
11	BRIGHTON and HOVE ALBION	(H)	5-1
15	CRYSTAL PALACE	(A)	0-0
18	CARLISLE UNITED	(A)	0-0
22	WREXHAM	(H)	3-0
25	DARLINGTON (Cup)	(H)	4-0
29	HALIFAX TOWN	(A)	3-4
October 2	BRISTOL ROVERS	(H)	
6	WATFORD	(H)	
9	BRISTOL ROVERS	(A)	
13	BRISTOL CITY	(A)	
20	READING	(H)	
27	PORT VALE	(A)	
November 3	(1)		
10	MILLWALL	(A)	
17	SOUTHEND UNITED	(H)	
24	(2)		
December 1	NOTTS COUNTY	(H)	
8	BOURNEMOUTH and B.A.	(A)	
15	BARNLEY	(H)	
22	NORTHAMPTON TOWN	(A)	
26	BRADFORD	(A)	
29	BRADFORD	(H)	
1963			
January 5	(3) COLCHESTER UNITED	(A)	
12	QUEEN'S PARK RANGERS	(H)	
19	HULL CITY	(A)	
26	(4) SHREWSBURY TOWN	(H)	
February 2	CRYSTAL PALACE	(H)	
9	WREXHAM	(A)	
16	(5) HALIFAX TOWN	(H)	
23	WATFORD	(A)	
March 2	BRISTOL CITY	(H)	
8	(6) READING	(A)	
16	PORT VALE	(H)	
23	SHREWSBURY TOWN	(A)	
30	(S.F.) MILLWALL	(H)	
April 6	SOUTHEND UNITED	(A)	
12	PETERBOROUGH UNITED	(H)	
13	COLCHESTER UNITED	(H)	
15	PETERBOROUGH UNITED	(A)	
20	NOTTS COUNTY	(A)	
27	BOURNEMOUTH and B.A.	(H)	
May 4	(FINAL)		

H. HIBBERD LIMITED

40 NEWPORT STREET - SWINDON

PLANT HIRE



TRACTORS and SCRAPERS

BULLDOZERS

DOTT SHOVELS

J.C.B. and DINKUM DIGGERS

ROAD ROLLERS

TELEPHONE: SWINDON 6125

Hatton's Newsagency

A. J. D. Woodhouse and A. Smith

**Newsagents :: Tobacconists
Confectioners**

Agents for Wessex School of
Motoring

Main Booking Agents for Millers
Coaches

6 Regent Circus (near G.P.O.)

Telephone Swindon 22731

HULFORD MOTORS Ltd.

SELF DRIVE HIRE

Fleet of 1962 Fords
Populars - Anglias - Consuls

SHRIVENHAM ROAD

(200 yards from Football Ground)

Phone 4934

Large Car Park available

For High Class
Central Heating, Plumbing
Painting and Decorating
Electrical Installations
and Repairs

**NORTH WILTS
Sanitary & Heating
Co. Ltd**

NEWPORT ST., SWINDON

Phone 5373/4

WARNES (Swindon)

Electrical Contractors - Radiators

Contractors to SWINDON TOWN

**160 COUNTY ROAD, SWINDON
9 SWINDON STREET, HIGHWORTH
7 CLIVE PARADE, SWINDON**

RIGHT WING

**SWINDON
Turner**

Wollen (2)

Morgan (4)

Owen (5)

Summerbee (7) Hunt (8) Smith (9)

Swindon Colours:
RED SHIRTS, WHITE SHORTS



Jones, R. (11) Hamilton (10) Oldfield (9)

Mabbutt (6) Sykes (5)

Jones, G. (3) Br

Million

LEFT WING

BRISTOL ROVER

WARNES T.V.

TO BE SUP

51 Commercial Road - Swindon

and Branches

(Swindon) LTD.

ers - Radio and Television

DON TOWN FOOTBALL CLUB

PHONE 6346/7

PHONE 379

PHONE 6346/7

SWINDON

LEFT WING

Turner

Trollope (3)

Owen (5)

Woodruff (6)

Smith (9)

Jackson (10)

Darcy (11)

**FOOTBALL
PINK**

These teams are subject
to alteration

Oldfield (9) Williams (8) Jarman (7)

Mykes (5)

Bumpstead (4)

Bradford (2)

Million

STOL ROVERS

RIGHT WING

T.V. RENTALS

BE SURE

d - Swindon - Phone 6486

d Branches

McILROYS

RESTAURANT

for morning coffee,
luncheon and
afternoon tea - in
pleasant surroundings -
you will find McIlroys
are top of the
'league'.

Full table service, best Beers
and Wines. Parties and
Functions catered for.

McIlroys Restaurant

64-72 Regent Street

Tel. 5294



THE ALCOHOL FUEL

COATE GARAGE

REPAIRS - OVERHAULS - WELDING
SERVICING - REBORING - TYRES

Props. E. V. & W. H. Mattick

Marlborough Rd., Swindon

SUPPORTERS' CLUB NOTES

We have had to contribute notes to these programmes so frequently of late that much of what we say is out of date by the time the news is read. We are, however, pleased to report continual progress in respect of the Competition. Ticket sales in the week ending 22nd September reached 14,657 and, out of the total receipts of £733, there will be a sum of £344 available for Club Funds and thence to Swindon Town F.C.

This augurs well for the total amount available for the season being in the region of a record donation if present sales are maintained.

We have heard varying comments from spectators concerning the new "Anthem" proposed for the Town, which, it must be admitted, has not yet shown signs of achieving great popularity.

In saying this we do not in any way wish to disparage the effort, selected by the sponsors, as the most suitable song. The perpetrator is a very good friend of ours, and is to be commended for the interest which he took.

The words fit the selected tune admirably, but quite a common feeling is that the latter, with its somewhat broken rhythm, is likely to prevent a spontaneous burst into song during the excitement of a match.

The classic example is, of course, the tune used by supporters of Tottenham Hotspur and other clubs, but we are told that there has, generally speaking, been little organised

HAVE YOU SIGNED ON YET

FOR
YOUR

SWINDON ECHO

4d.
WEEKLY

IF NOT THEN DO SO AT YOUR LOCAL NEWSAGENT
AND JOIN OUR GROWING TEAM OF READERS

For your pleasure try

RIVERSIDE LECHLADE LTD.

Tea Room and Gardens - Boating

4 Berth and 2 Berth Cabin Cruisers for hire, also Motor Boats,
Camping Punts, Rowing Boats, Canoes, etc. Parties catered for.

PRIVATE CAR PARK

Telephone: Lechlade 229

Little & Co. Ltd.

Try us for
Clothes for all
the family on
all occasions

31-32 FLEET STREET
SWINDON

Tel. 22831

We have a
reputation for
Value & Service
that is second
to none

THE POPULAR MEN'S & LADIES'
COMPLETE OUTFITTERS

SEE THE LOVELY SELECTION OF
CHOCOLATES AND SWEETS

Greetings Cards a Speciality

CECIL GREEN

CONFECTIONER AND TOBACCONIST

13 VICTORIA ROAD

Telephone 4416

SUPPORTERS' CLUB NOTES - continued

rehearsal, and the crowds have quite spontaneously sung that "The Spurs" or "The Reds" or "The Whites" — as the case may be on different grounds — "go marching on".

There seems no reason why "the Town" should not do likewise, and the tune, which is of a more flowing nature, seems to be of the type to appeal more readily to the public imagination.

However, we feel that the Town players will readily admit that they receive quite a good measure of vocal encouragement, even though it may not be musical.

We have no doubt that our visitors this evening, also, will be well supported. We have not had the pleasure of seeing Bristol Rovers' fans at the County Ground for some time, and look forward to renewing some old acquaintances among their Supporters' Club Committee.

In fact, October seems to be a reunion month, with Watford and Reading also to visit us. With two away matches at Bristol, there are some tough fixtures during the next few weeks.

Probably a number of supporters will be going to Bristol on the 9th October for the fixture with the Rovers, while, on the following Saturday, we have organised a Supporters' Club Outing on the occasion of the match with the City.

We hope that there will be plenty to shout about!

F. J. ROPER
DEVIZES RD.
SWINDON

Phone 22341

FERNDALE
FISHERIES
FERNDALE RD.
SWINDON

Phone 3614

**SWINDON'S
FINEST
FISH and CHIPS**

**CALL ON
YOUR
WAY
HOME**

F. J. ROPER
CLIFTONIAN
38 WILLIAM ST.
SWINDON
Phone 3785

**WE SHALL BE
WAITING
TO
SERVE YOU**

Menu

**Plaice
Hake
Cod
Skate**

F. J. ROPER
HIGH ST.
WOOTTON
BASSETT

F. J. ROPER
CROSS HAYES
MALMESBURY

DIVISION III LEAGUE TABLE

	P	W	D	L	F	A	Pts.
Watford	13	8	1	4	33	21	17
Queen's Park Rangers	12	7	2	3	30	15	16
Northampton Town	11	6	3	2	31	15	15
Bristol City	12	5	4	3	25	18	14
Peterborough United	12	5	4	3	28	22	14
Shrewsbury Town	13	5	4	4	31	26	14
Port Vale	13	6	2	5	18	16	14
Bournemouth	13	4	6	3	15	14	14
Coventry City	13	5	4	4	21	22	14
Notts County	12	6	2	4	17	20	14
Swindon Town	12	4	5	3	23	15	13
Millwall	13	3	7	3	30	23	13
Hull City	12	6	1	5	20	19	13
Wrexham	11	6	1	4	21	24	13
Colchester United	13	4	5	4	21	25	13
Southend United	13	6	0	7	23	29	12
Bristol Rovers	12	4	3	5	20	22	11
Bradford	12	3	5	4	18	24	11
Reading	13	4	1	8	22	26	9
Crystal Palace	12	1	7	4	10	17	9
Halifax Town	13	4	1	8	17	34	9
Barnsley	12	3	2	7	13	20	8
Brighton & H.A.	12	2	4	6	13	24	8
Carlisle United	10	1	4	5	12	22	6

This space is reserved for

EDWIN H. BRADLEY & SONS LTD.

Builders - Swindon

Eric

(E. Ayliffe)

GENTLEMEN'S HAIRDRESSER

57/59 Faringdon Road, Swindon.

Phone 4569

APPOINTMENTS MAY BE BOOKED IN PRIVATE SALON

ALSTON & YOUNG LTD.

121-123 CRICKLADE ROAD, SWINDON.

Tel. 6671

Scooter and Three-Wheeler Specialists

Main Agents - LAMBRETTA - VESPA - TROJAN

First class after sales service

Open daily 9.0 a.m. to 7.30 p.m.

SUPPORT YOUR HOME

CIVIL DEFENCE

**Plays a vital part in saving lives
in PEACE or WAR**

Particulars:

CIVIC OFFICES, SWINDON

**WISES CATERING
SERVICE**

(Reg. Wise)

**Our Caterer for the past 14 seasons
Guarantees**

**A GOOD CUP OF TEA AT THE
COUNTY GROUND**

**A full range of Sweets & Cigarettes
at any of our five kiosks on your
way in. ENJOY YOURSELF!!**

FORTHCOMING MATCHES

DIVISION III

SWINDON TOWN

v.

WATFORD

SATURDAY NEXT, OCTOBER 6th, 1962

Kick-off 3 p.m.

ENGLISH SCHOOLS SHIELD

SWINDON BOYS

v.

WOKINGHAM BOYS

SATURDAY, OCTOBER 13th, 1962

Kick-off 10.30 a.m.

DIVISION III

SWINDON TOWN

v.

READING

SATURDAY, OCTOBER 20th, 1962

Kick-off 3 p.m.

BRETTS PET AND GARDEN SUPPLIES

32-33 COMMERCIAL ROAD

and

6 CROMWELL STREET - SWINDON

When thinking of your new
T.V. - Radio - Washing Machine - Refrigerator
make your **GOAL**

HOLMES & LUCAS

14 REGENT STREET - SWINDON

Stockists of all leading makes

Telephone 22526-4721

FOR ALL YOUR ANGLING NEEDS
CONSULT

FRANK WOODWARD

Swindon's Fishing Tackle Specialist

25 HAVELOCK ST., SWINDON

PHONE 3879

For Paints of Good Quality

H. S. HODGES & SONS

(SWINDON) LTD.

CRICKLADE RD. - SWINDON

PHONE 22422

Dulux, Brolac, Friary, Valspar,
Wallcharm, etc.

SOUTHERN LAUNDRY

Co. Ltd.

Launderers and Dry Cleaners

STATION ROAD - SWINDON

TELEPHONE 4161

COMLEY'S

Modern Music Centre

26 HAVELOCK ST., SWINDON

RECORDS - MUSIC - INSTRUMENTS

Top Twenty 'Pops' always in stock
and wide selection of Jazz & Classics

Personal Supervision

Phone 3874

FOOTBALL COMBINATION

Fixtures and Results to date

Date	Opponents	Ground	Result
August 18	SOUTHEND	(H)	3-1
21	MILLWALL	(A)	1-2
25	BOURNEMOUTH and B.A.	(A)	3-1
September 1	CHELSEA	(H)	0-2
3	WATFORD	(A)	2-2
18	QUEEN'S PARK RANGERS	(H)	3-2
26	SOUTHAMPTON	(A)	3-3
October 23	COVENTRY CITY	(H)	
27	ALDERSHOT	(H)	
November 7	LEYTON ORIENT	(A)	
10	BRIGHTON	(H)	
27	BRENTFORD	(H)	
December 8	CHARLTON	(A)	
11	FULHAM	(H)	
19	PORTSMOUTH	(A)	
22	BIRMINGHAM	(A)	

1963

January 1	READING	(H)	
9	READING	(A)	
15	BOURNEMOUTH and B.A.	(H)	
19	SOUTHEND	(A)	
29	WATFORD	(H)	
February 4	QUEEN'S PARK RANGERS	(A)	
12	MILLWALL	(H)	
23	CHELSEA	(A)	
26	SOUTHAMPTON	(H)	
March 6	COVENTRY CITY	(A)	
9	ALDERSHOT	(A)	
19	LEYTON ORIENT	(H)	
23	BRIGHTON	(A)	
April 6	BIRMINGHAM	(H)	
9	BRENTFORD	(A)	
16	CHARLTON	(H)	
22	FULHAM	(A)	
30	PORTSMOUTH	(H)	

WILTSHIRE PREMIER LEAGUE

Fixtures and Results to date

Date	Opponents	Ground	Result
August 18	RADSTOCK	(H)	1-1
22	PINEHURST	(A)	1-4
25	STONEHOUSE	(A)	3-0
29	PINEHURST	(H)	1-0
September 1	PURTON	(H)	3-1
8	CALNE	(A)	2-0
15	DEVIZES	(H)	6-1
19	FROME	(A)	1-3
22	TROWBRIDGE	(H)	2-0
29	FROME	(H)	3-0
October 6	WARMINSTER	(H)	
13	PEASEDOWN	(A)	
20	CLANDOWN	(H)	
27	PAULTON	(A)	
November 3	WESTBURY	(H)	
10	MELKSHAM	(A)	
24	CHIPPENHAM	(H)	
December 1	WOOTTON BASSETT	(A)	
8	SWINDON B.R.	(H)	
15	STONEHOUSE	(H)	
22	PURTON	(A)	
29	CALNE	(H)	

1963

January 5	DEVIZES	(A)	
19	WARMINSTER	(A)	
26	PEASEDOWN	(H)	
February 2	CLANDOWN	(A)	
9	PAULTON	(H)	
16	WESTBURY	(A)	
23	MELKSHAM	(H)	
March 2	CHIPPENHAM TOWN	(A)	
9	WOOTTON BASSETT	(H)	
16	SWINDON B.R.	(A)	
23	RADSTOCK	(A)	
	TROWBRIDGE (to be arranged)	(A)	



Ernie Hunt

G. A. STREETLY

Tobacconist and Confectioner

10 BOURNE ROAD - MOREDON - SWINDON

Telephone: 4956

**ADVERTISING SPACE
IN THIS PROGRAMME
TO LET**

Apply:-

SECRETARY,
SWINDON TOWN F.C.,
COUNTY GROUND, SWINDON

Have you purchased your ticket for the

DEVELOPMENT FUND COMPETITION?

Draw at half-time on Saturday for
six prizes:

£100

£50

£20

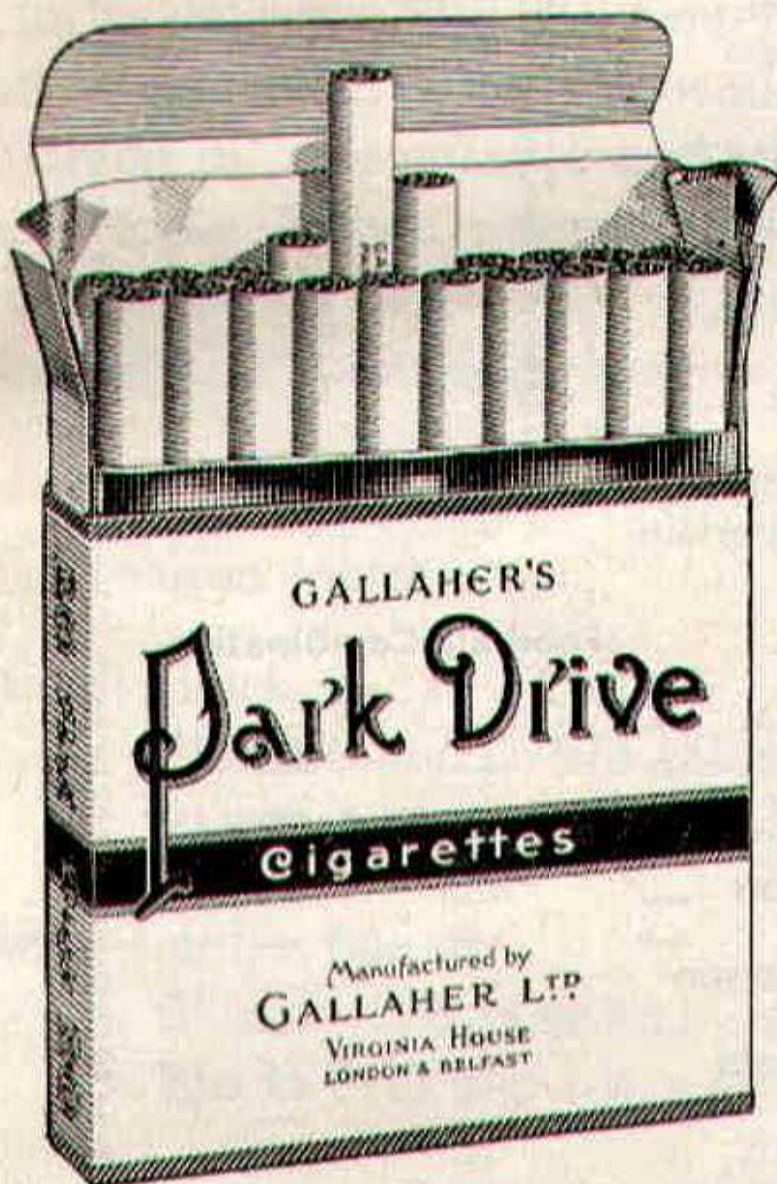
£15

£10

£5

**TICKETS 1/- each
on sale now**

PARK DRIVE



for pleasure

PLAIN 20 for 3/5 TIPPED 20 for 2/10

PLAYERS APPEARANCES AND GOAL SCORERS

	Division III		League Cup	
	Appearances	Goals	Appearances	Goals
Turner	9	-	1	-
O'Hara	3	-	-	-
Wollen	12	-	1	-
Trollope	12	1	1	-
Morgan	12	-	1	-
Owen	12	-	1	-
Woodruff	12	-	1	-
Summerbee	3	-	1	-
Darcy	10	3	1	-
Hunt	12	8	1	-
Smith	12	4	1	3
Atkins	3	-	-	-
Smart	7	2	-	-
Jackson	12	4	1	1
Chamberlain	1	-	-	-

Football Combination

O'Hara	1	-
Hicks	3	-
Turner	2	-
Hellin	6	-
Dawson	6	-
Smart	3	-
McPherson	6	-
Harber	6	-
Shergold	3	-
Darcy	1	-
Stevens	6	6
Leggett	5	2
Chamberlain	6	2
Weaver	4	2
Rogers	5	-
Colsell	1	-
Atkins	1	-
Summerbee	1	1

STAND TICKETS

Tickets for seats in the Old and New Stands may be booked in advance. Postal applications should be accompanied by a remittance and stamped addressed envelope. Tickets ordered by telephone must be collected not later than 12 noon on the day of the match, otherwise they will not be reserved.

Prices for League Matches:-

New Stand: Block C-6/6 (Centre)

Blocks B and D-5/6 (Side Stands)

Blocks A and E-4/6 (Wing Stands)

Old Stand: Centre Box-8/-

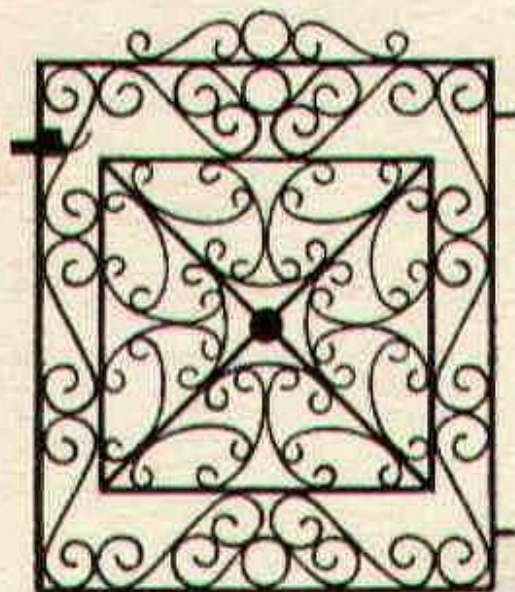
Block H-5/6 (Centre)

Blocks F, G and I-4/- (Side Stands)

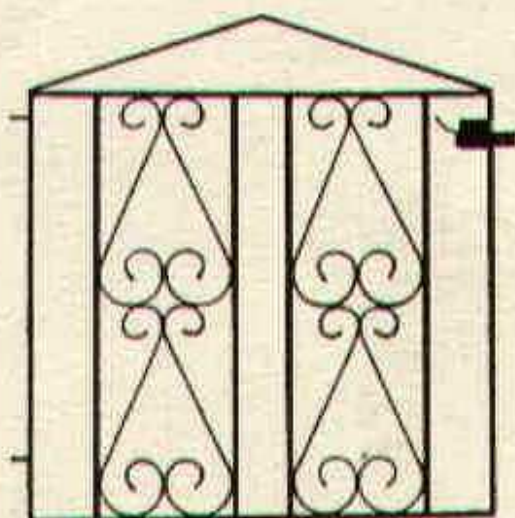
Postal applications to: Secretary, Swindon Town F.C., County Ground, Swindon, Wilts. Telephone Swindon 22118.



Gatemaster



T.G. 621



T.G. 626

Gates from 58/-
Singles and Doubles

If you live in the Swindon
area we will measure your
Gateway for you.

Our Decorative Ironwork
also includes:

FIRESCREENS
COFFEE TABLES
LAMPS
BRACKETS
CORNER TABLES
BALUSTRADES

SEND FOR FREE CATALOGUE
MARTYN LYNshaw LIMITED

20 Boundary Works, Stratton Road,
SWINDON. TEL. 4177